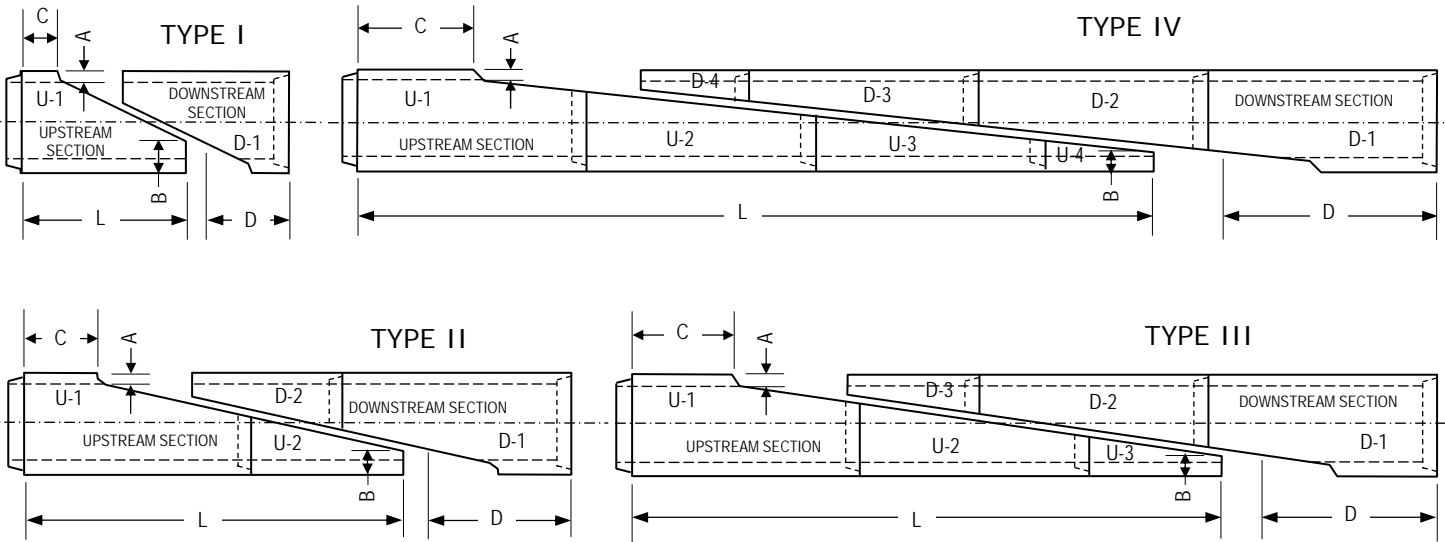


TONGUE & GROOVE JOINT



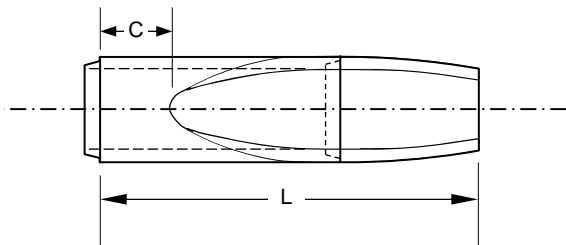
PIPE SIZE (IN)	WALL A (IN)	OD (IN)	B (IN)	SLOPE	TYPE/ JOINT LGT (FT)	C (IN)	D (IN)	L (IN)	SLOPE	TYPE/ JOINT LGT (FT)	C (IN)	D (IN)	L (IN)	SLOPE	TYPE/ JOINT LGT (TF)	C (IN)	D (IN)	L (IN)
12	2	16	6	3:1	1/6	18	30	42	4:1	1/6	12	28	44	6:1	2/4	12	36	60
15	2¼	19½	6	3:1	1/8	24	35¼	60¾	4:1	1/8	18	33	63	6:1	2/6	27	49½	94½
18	2½	23	6	3:1	1/8	21	31½	64½	4:1	1/8	12	26	70	6:1	2/8	42	63	129
21	2¾	26½	6	3:1	1/8	16½	26¾	69¾	4:1	2/8	54	67	125	6:1	2/8	33	52½	139½
24	3	30	9	3:1	1/8	12	30	66	4:1	2/8	48	72	120	6:1	2/8	24	60	132
27	3¼	33½	9¼	3:1	2/8	55½	73½	118½	4:1	2/8	42	66	126	6:1	2/8	15	51	141
30	3½	37	9½	3:1	2/8	51	69	123	4:1	2/8	36	60	132	6:1	3/8	54	90	198
36	4	44	10	3:1	2/8	42	60	132	4:1	2/8	24	48	144	6:1	3/8	36	72	216
42	4½	51	10½	3:1	2/8	33	51	141	4:1	2/8	12	36	156	6:1	3/8	18	54	234
48	5	58	11	3:1	2/8	24	42	150	4:1	3/8	48	72	216	6:1	4/8	48	84	300
54	5½	65	11½	3:1	2/8	15	33	159	4:1	3/8	36	60	228	6:1	4/8	30	66	318
60	6	72	12	3:1	3/8	54	72	216	4:1	3/8	24	48	240	6:1	4/8	12	48	336
66	6½	79	12½	3:1	3/8	45	63	225	4:1	3/8	12	36	252	6:1	5/8	42	78	402
72	7	86	13	3:1	3/8	36	54	234	4:1	4/8	48	72	312	6:1	5/8	24	60	420

NOTES

1. SLOPE CUTS WILL BE ROUGH CUT APPROXIMATELY 2" WIDE AND MUST BE FINISHED BY CONTRACTOR.

2. THESE PRODUCTS MEET THE REQUIREMENTS FOR TEXAS DEPARTMENT OF TRANSPORTATION TYPE II SAFETY END TREATMENTS.

PLAN VIEW OF UPSTREAM SLOPED END SECTION



4/20/2017



REINFORCED CONCRETE PIPE SLOPED END SECTIONS

TXDOT TYPE II - SAFETY END TREATMENTS

CUT-PIPE